

# DESIGN CONCEPT

LISA ELLIOTT | MASTER BEDROOM



## WELCOME

Thank you for the opportunity to design your master bedroom. It has been a thoroughly enjoyable and rewarding project to work on.

Please take your time exploring the information provided. You'll also find a 'Next Steps' guide toward the end of this presentation.

I welcome any questions or feedback and look forward to hearing your thoughts.

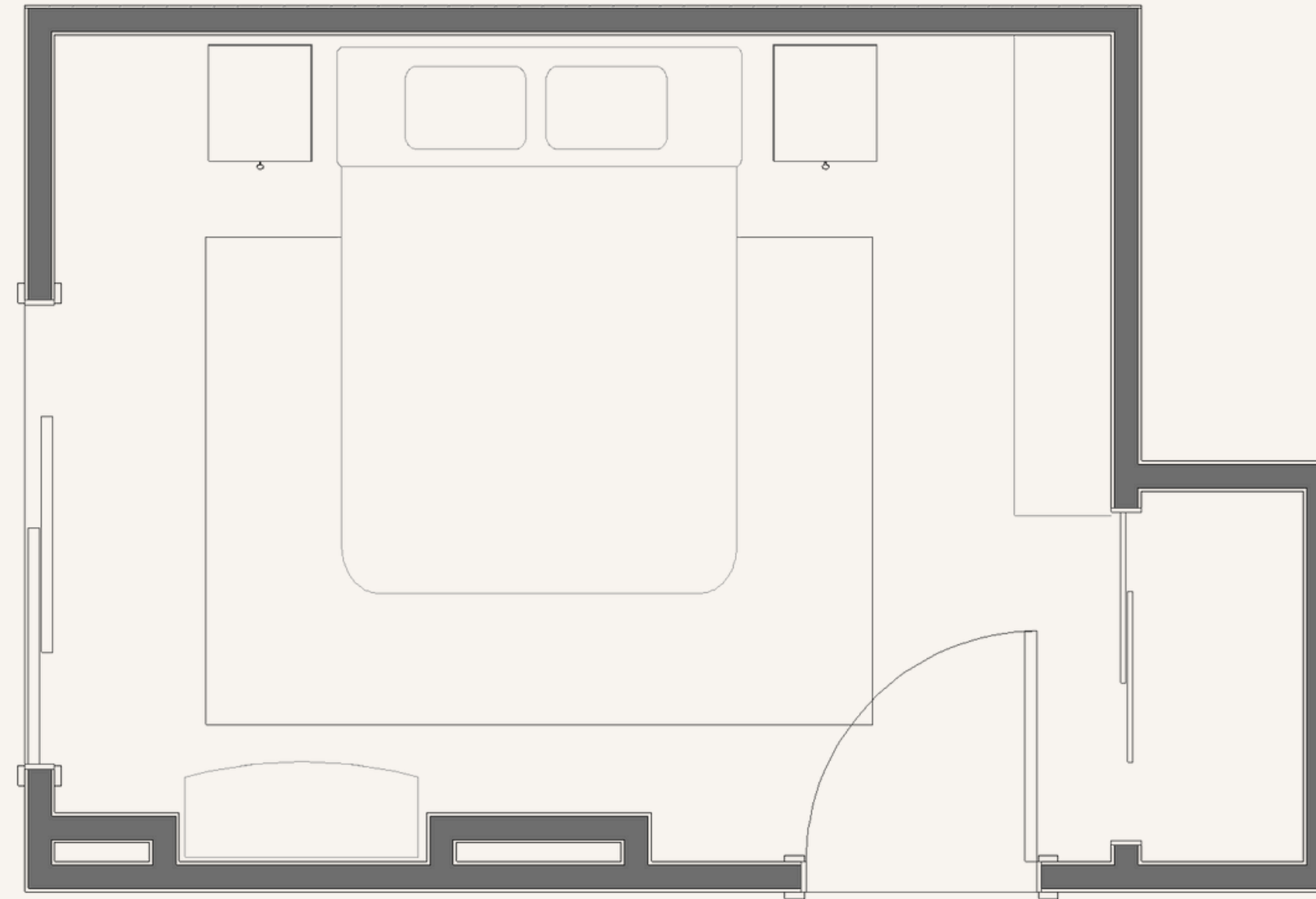


*Kristine Franklin*  
FOUNDER & LEAD DESIGNER

BEFORE



CONCEPT OVERVIEW (2D FLOORPLAN)



CONCEPT OVERVIEW (3D FLOORPLAN)



CONCEPT OVERVIEW (3D FLOORPLAN - WATERCOLOUR SKETCH)



360°

PAINTED HIVE INTERIORS

## PANORAMA

CLICK TO VIEW



VIRTUAL RENDERINGS: Please note that some materials and products shown are illustrative only. Where actual items have been incorporated, they have been represented as accurately as possible. Lighting shown may differ to conditions in reality. A wide field of view may be used to capture a larger portion of the room, as such, scale may appear slightly distorted. As general decor is not an inclusion in this project scope items shown have been incorporated purely for illustrative purposes. Included colours are representational only. Unless previously arranged, areas outside the scope of this concept will not be included in the design.

RENDERING

PAINTED HIVE INTERIORS





RENDERING

PAINTED HIVE INTERIORS



DESIGN CONCEPT

LISA ELLIOTT

RENDERING

PAINTED HIVE INTERIORS



# RENDERING

CROSS-SECTION

PAINTED HIVE INTERIORS



PHOTO-REALISTIC RENDERINGS



NOTE: These images are derived from my original 3D renders however as the enhancement process utilised artificial intelligence, minor variations or inaccuracies may be present.

# COMPARISONS

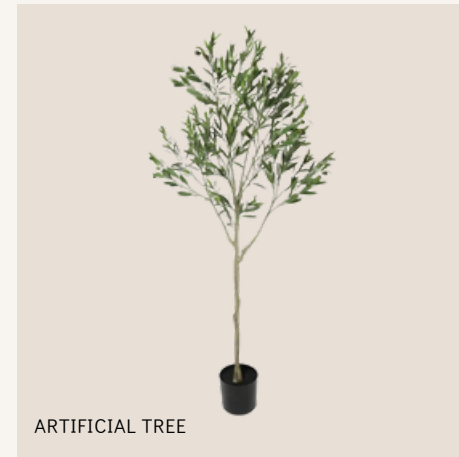
PAINTED HIVE INTERIORS



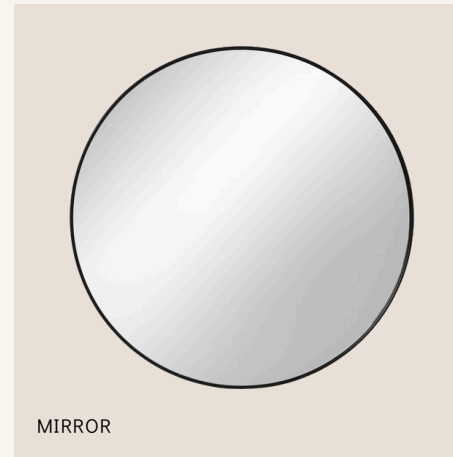
SHOPPING LIST



BEDSIDE TABLES



ARTIFICIAL TREE



MIRROR



PAINT (DULUX GENTLE CALM HALF)



PAINT (DULUX WHITE EXCHANGE HALF)



LEATHER LUMBAR CUSHION



WARDROBE HARDWARE



WALL ART

Whilst this Shopping List has been tailored for you, there are multiple product alternatives on the market you may wish to explore for reasons relating to budget, quality, practicality, comfort, ethicality and personal preference. You may even like to consider shopping second-hand as a means of finding unique and affordable items, or buying from local businesses as a way of supporting your community. I always suggest viewing and/or thoroughly researching products prior to purchase.

All specified products are available at the time of developing this concept however please understand that some may be subject to manufacturing lead-times, delivery delays or be low in stock.

Product images are linked to their respective online source.

*I make no guarantees that sourced products will meet individual expectations, especially where budget constraints are a factor.*

## DESIGN NOTES

### LAYOUT

To balance the room and create a sense of symmetry with the wall moulding, I recommend centring the bed on the rear wall. This allows the bed to align neatly with the moulding so it feels intentional and visually grounded. Flanking the bed with matching small-to-mid scale bedside tables will further enhance the feeling of harmony and proportion, and help anchor the bed wall as a strong focal point.

### PAINT

My suggestion is to paint the entire bed wall and both adjoining walls in a soft green. This would include the bulkheads, which will help them feel integrated rather than visually separate. I also recommend carrying this green onto the skirting boards throughout the entire room — a detail that works beautifully to unify the space and create a more considered, cohesive look.

Painting the recessed wall in the same green will visually link that area back into the room while providing subtle interest. Extending the green across the wardrobe will help it feel intentional and integrated, allowing it to visually recede and “disappear” rather than compete for attention.

On the wall opposite the bed, I’ve suggested an earthy white. This will pair beautifully with the green while providing a sense of relief and freshness, helping the room feel light and balanced.

*As always, I strongly advocate testing paint samples in situ, as natural and artificial light conditions vary from space to space and can significantly affect how colours read.*

### MOULDING

Six large thin frames will provide visual interest without feeling overly fussy or busy. This scale suits the proportions of the room and complements the architectural elements already present.

### WARDROBE

Because the wardrobe isn’t ideally proportioned, I suggest refraining from fully “building it in.” You may choose to remove the rear skirting so it sits flush against the back wall; however, you may find that retaining the side skirting is beneficial, as it can act as a spacer and allow the left door to open more freely.

A simple bead or trim piece can be added to visually connect the wardrobe to that left wall, making it feel attached rather than freestanding. Adding basic crown moulding at the top will also provide a more finished, intentional look.

To further enhance this, I recommend using the same wall moulding to dress the front of each wardrobe door. Starting the moulding at the same distance from the floor as the wall moulding will ensure consistency.

Adding hardware will give the wardrobe additional character and help elevate it.

### WINDOW DRESSINGS

Because the door is positioned hard against the left wall, I like the idea of using a single block-out curtain that stacks to the right. Installing a rod that extends beyond the window frame will allow the curtain to stack fully away from the glass, maximising natural light when open.

You may also wish to include a sheer curtain. Sheers are excellent for adding softness and privacy, and they work as gentle light diffusers — particularly helpful in darker rooms where even light distribution is important. Dual-rod systems can be expensive, though there are DIY alternatives available that are more affordable.

## DESIGN NOTES

### BEDSIDE TABLES

I explored a few different colour options for the bedside tables and landed on a warm clotted-cream tone. This will coordinate nicely with the warm timber in the room while still providing contrast.

The tables shown are metal, which I like as a way of introducing a new material to offset the timber-heavy palette. While these particular pieces don't have strong reviews, they represent the scale and style I'd suggest: mid-scale to suit the room's proportions, and with drawers to provide practical storage.

This suggestion is purely indicative — there are many suitable alternatives. And if you find tables you love but the colour isn't quite right, remember they can always be painted.

### DRESSER

This is simply an idea. I know you mentioned that you like your current hamper; however, I thought it might be advantageous to introduce a piece here with more height and added storage potential. The width of this nook is ideal for a range of standard-sized dressers, and an affordable second-hand vintage or antique piece would be relatively easy to source via Marketplace.

While depth is limited, there is enough allowance for a small amount of projection without it feeling intrusive.

### MIRROR

To further assist with brightness, a large mirror positioned within the nook would reflect light from the sliding door back into the room. This is merely a suggestion and can be adjusted based on your preferences.

### WALL ART

I've intentionally kept wall art very simple. With the wall bump-out, bulkheads and new moulding, there is already plenty of visual interest in the room. This approach avoids overcomplicating the space, though you can absolutely adjust the subject matter to suit your personal taste.

### PLANT

I noticed indoor trees featured in many of your inspiration images. The junction of the rear and left wall would be a perfect position for a piece like this, adding softness, height and a natural element to the room.

### DECOR & BEDDING

All decor and bedding shown are purely illustrative and intended to communicate mood, palette and layering rather than prescribe specific items.

### MAP

Your world map is lovely and could certainly work if you'd prefer to use it in place of a mirror. I was simply mindful of your comment about wanting solutions that help increase light within the room.

### PIANO STOOL

I know you mentioned that you like the piano stool; however, from a design and balance perspective it does feel somewhat redundant in this space. If it doesn't serve a practical function here, I would suggest relocating it to another area where it can be better appreciated.



## NEXT STEPS

### ACKNOWLEDGMENT & REVISIONS

Upon receipt of this document, please send a brief acknowledgment email letting me know it has been successfully accessed.

Carefully review the Design Concept provided and request any revisions, if needed, within two weeks (please let me know if a time extension is required).

*If needed, please refer to the Revisions section within the T&C of the original proposal for clarification around revision inclusions.*

### VIRTUAL WALK-THROUGH MEETING

If you have multiple adjustment ideas, or would simply like a more in-depth tour of the concept, a Virtual Walk-Through Meeting provides the opportunity to navigate around the 3D model and live edit the concept.

*\$120 for 45 minutes*

### FURTHER QUESTIONS & ASSISTANCE

Please don't hesitate to reach out with any further questions or assistance enquiries.



the painted  
*hive*  
INTERIORS BY KRISTINE FRANKLIN

[kristine@thepaintedhive.net](mailto:kristine@thepaintedhive.net)  
[www.thepaintedhive.net](http://www.thepaintedhive.net)  
Melbourne, Australia